

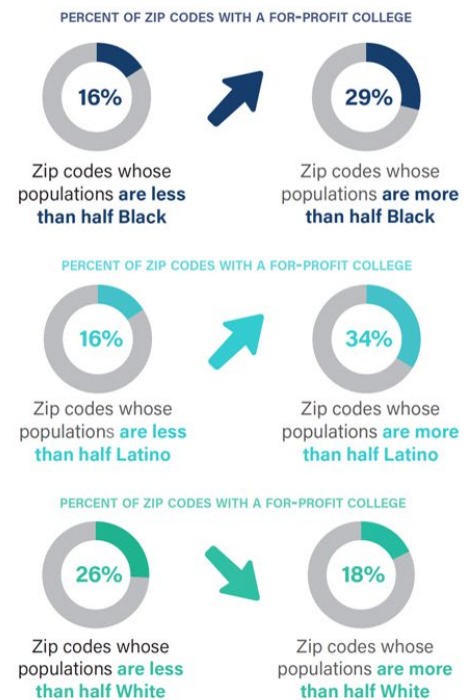
# Mapping Exploitation: Exhibits

Note: figure titles here reflect titles for related figures in the report *Mapping Exploitation: Examining For-Profit Colleges as Financial Predators in Communities of Color*

## National findings:

**Figure 1: Nationally, zip codes that are majority Black or Latino are far more likely to have a for-profit college.**

- Majority-Black zip codes are **over 75 percent more likely** to have a for-profit college
- Majority-Latino zip codes are **over 110 percent more likely** to have a for-profit college
- Majority-White zip codes are **almost 30 percent less likely** to have a for-profit college

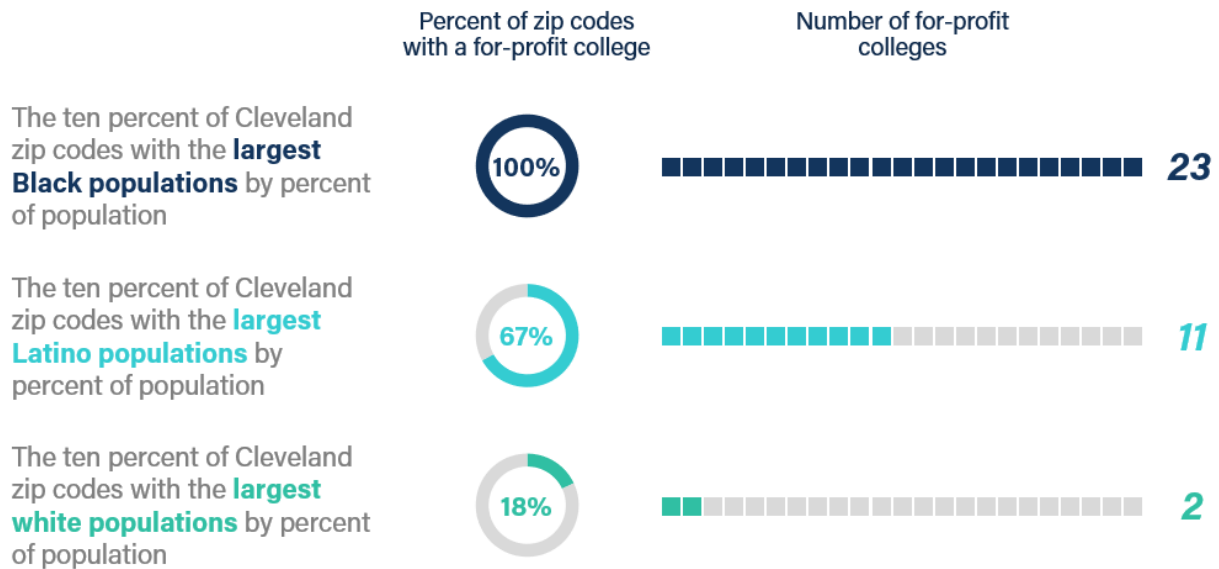


**Figure 2: Nationally, zip codes that are majority Black or Latino average a far greater number of for-profit colleges.**



### City-level findings:

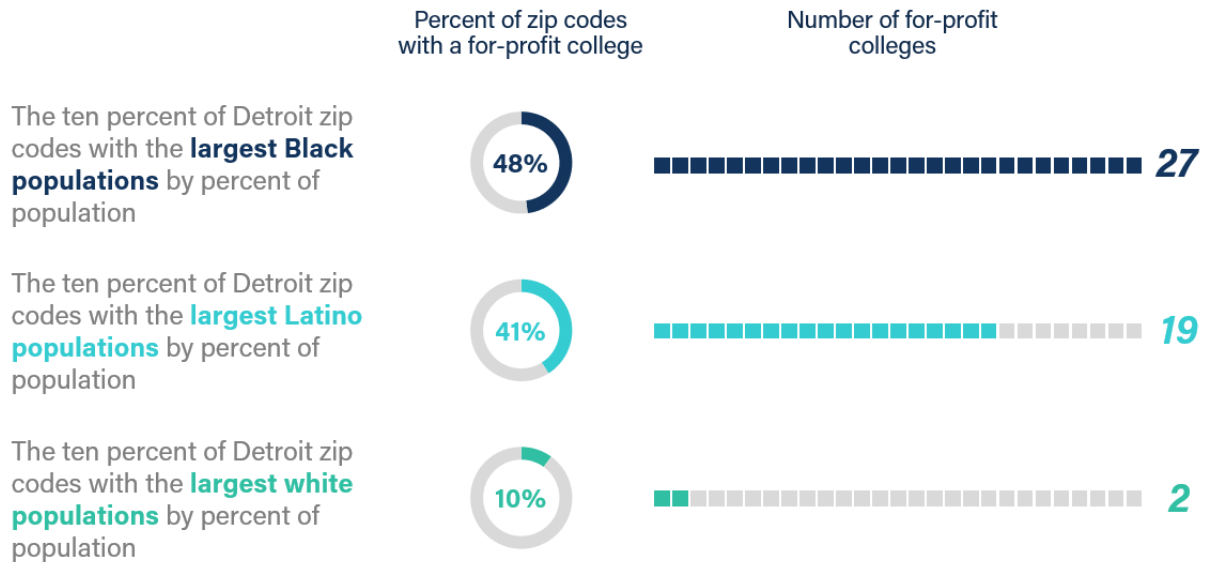
**Figure 3A: The areas of Cleveland with the densest Black populations have 11.5x more for-profit colleges than the areas with the densest white populations**



**Figure 3B: For-profit Colleges in Focus in Cleveland**

	% of students who are:				Share of attendees:		% of revenue spent on teaching per student	Median debt at repayment	% of borrowers who can't afford their loans:	
	Female	Black	Latino	Independent & earn <\$30K/year	Earning <\$25K/year 6 years after entry	Not working 6 years after entry			Overall	From low-income backgrounds
Bryant & Stratton College-Cleveland	82%	81%	6%	80%	61%	18%	19%	\$10,152	73%	77%
LaBarberia Institute of Hair	17%	79%	5%	UNAVAILABLE	UNAVAILABLE	UNAVAILABLE	36%	\$19,750	UNAVAILABLE	UNAVAILABLE
MDT College of Health Sciences	87%	94%	4%	89%	33%	10%	39%	\$14,250	60%	62%
Ohio Media School-Valley View	34%	37%	0%	84%	49%	12%	5%	\$9,500	62%	71%

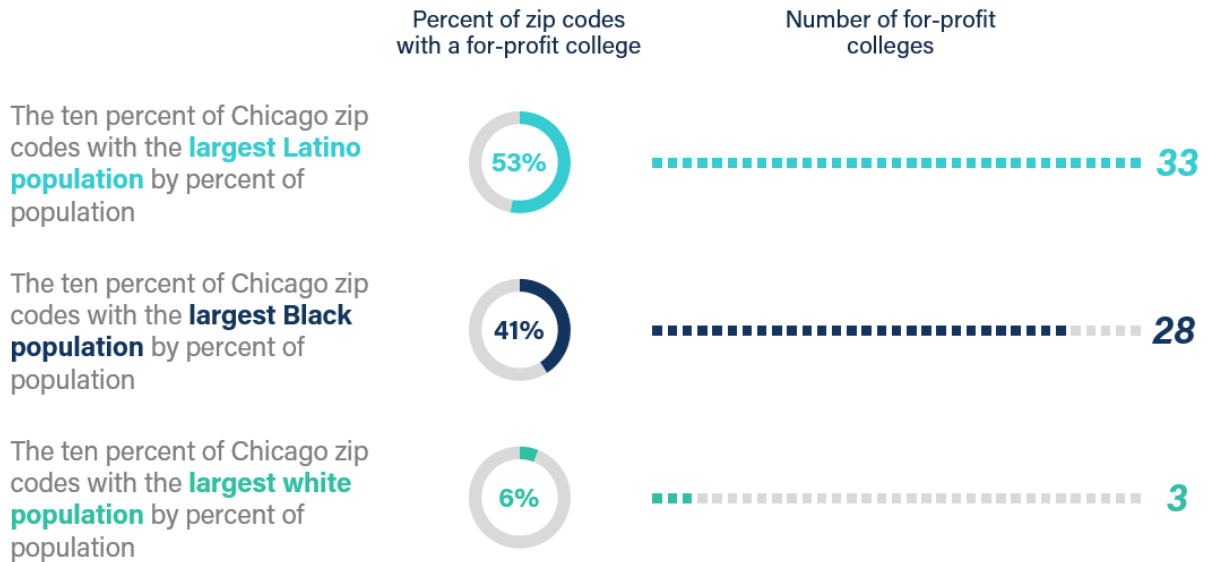
**Figure 4A: The areas of Detroit with the densest Black populations have 13.5x more for-profit colleges than the areas with the densest white populations**



**Figure 4B: For-profit Colleges in Focus in Detroit**

	% of students who are:				Share of attendees:		% of revenue spent on teaching per student	Median debt at repayment	% of borrowers who can't afford their loans:	
	Female	Black	Latino	Independent & earn <\$30K/year	Earning <\$25K/year 6 years after entry	Not working 6 years after entry			Overall	From low-income backgrounds
Dorsey School of Business-Roseville	81%	78%	2%	90%	71%	21%	36%	\$9,500	73%	77%
David Pressley School of Cosmetology	96%	43%	6%	82%	68%	20%	62%	\$6,500	47%	53%
Elevate Salon Institute	96%	33%	2%	90%	UNAVAILABLE	25%	56%	\$6,333	78%	UNAVAILABLE
North-western Technical Institute	5%	34%	1%	83%	47%	25%	16%	\$8,227	82%	87%
P&A Scholars Beauty School	95%	99%	1%	95%	79%	21%	19%	\$5,500	82%	83%

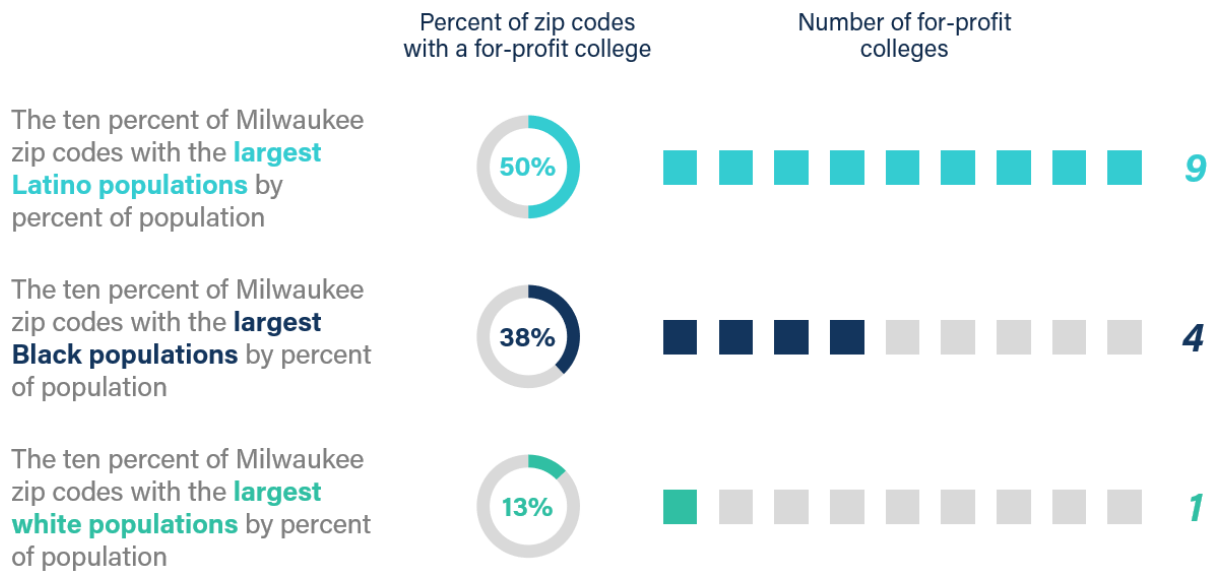
**Figure 5A: The areas of Chicago with the densest Latino populations have 11x more for-profit colleges than the areas with the densest white populations**



**Figure 5B: For-profit Colleges in Focus in Chicago**

	% of students who are:				Share of attendees:		% of revenue spent on teaching per student	Median debt at repayment	% of borrowers who can't afford their loans:	
	Female	Black	Latino	Independent & earn <\$30K/year	Earning <\$25K/year 6 years after entry	Not working 6 years after entry			Overall	From low-income backgrounds
SAE Institute of Technology-Chicago	15%	57%	19%	86%	UNAVAILABLE	15%	10%	\$5,650	42%	50%
University of Phoenix-Illinois	70%	51%	12%	69%	40%	19%	39%	\$18,500	63%	73%
Illinois Media School-Chicago Campus	34%	50%	0%	76%	41%	12%	13%	\$9,500	50%	61%
Cameo Beauty Academy	UNAVAILABLE	41%	18%	87%	75%	22%	79%	\$9,500	73%	77%

**Figure 6A: The areas of Milwaukee with the densest Latino populations have 9x more for-profit colleges than the areas with the densest white populations**

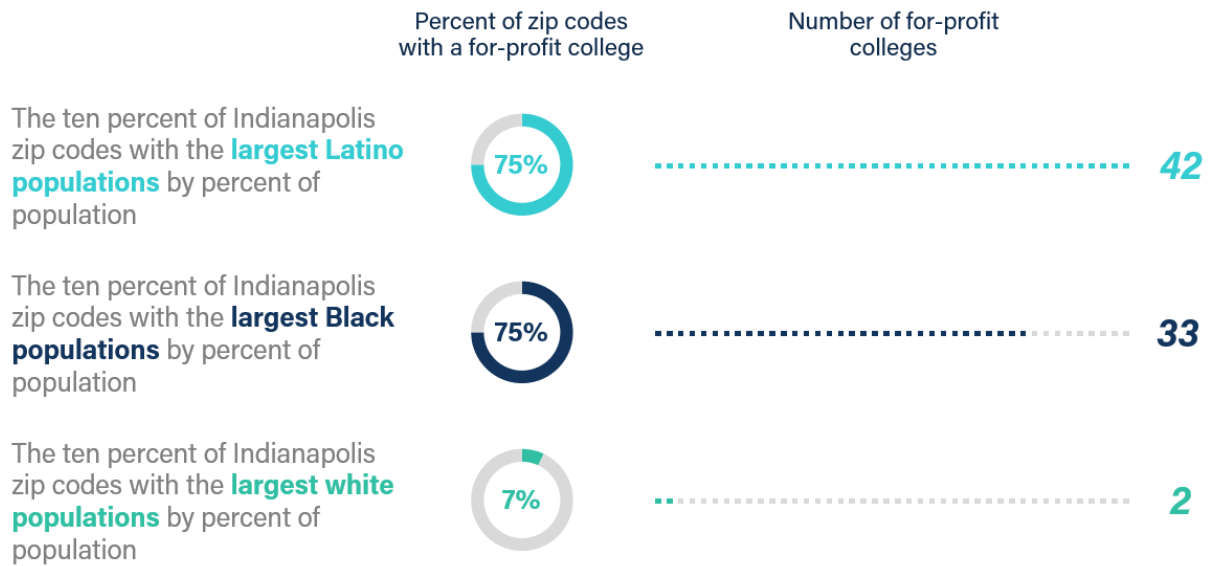


**Figure 6B: For-profit Colleges in Focus in Milwaukee**

	% of students who are:				Share of attendees:		% of revenue spent on teaching per student	Median debt at repayment	% of borrowers who can't afford their loans:	
	Female	Black	Latino	Independent & earn <\$30K/year	Earning <\$25K/year 6 years after entry	Not working 6 years after entry			Overall	From low-income backgrounds
Bryant & Stratton College-Wauwatosa	82%	29%	10%	80%	61%	18%	30%	\$10,152	73%	77%
Empire Beauty School-Milwaukee	95%	74%	13%	86%	71%	21%	90%	\$7,979	72%	75%
Milwaukee Career College	95%	46%	10%	86%	63%	13%	43%	\$7,520	74%	76%



**Figure 7A: The areas of Indianapolis with the densest Latino populations have 21x more for-profit colleges than the areas with the densest white populations**



**Figure 7B: For-profit Colleges in Focus in Indianapolis**

	% of students who are:				Share of attendees:		% of revenue spent on teaching per student	Median debt at repayment	% of borrowers who can't afford their loans:	
	Female	Black	Latino	Independent & earn <\$30K/year	Earning <\$25K/year 6 years after entry	Not working 6 years after entry			Overall	From low-income backgrounds
SAE Institute of Technology-Chicago	15%	57%	19%	86%	UNAVAILABLE	15%	10%	\$5,650	42%	50%
University of Phoenix-Illinois	70%	51%	12%	69%	40%	19%	39%	\$18,500	63%	73%
Illinois Media School-Chicago Campus	34%	50%	0%	76%	41%	12%	13%	\$9,500	50%	61%
Cameo Beauty Academy	UNAVAILABLE	41%	18%	87%	75%	22%	79%	\$9,500	73%	77%